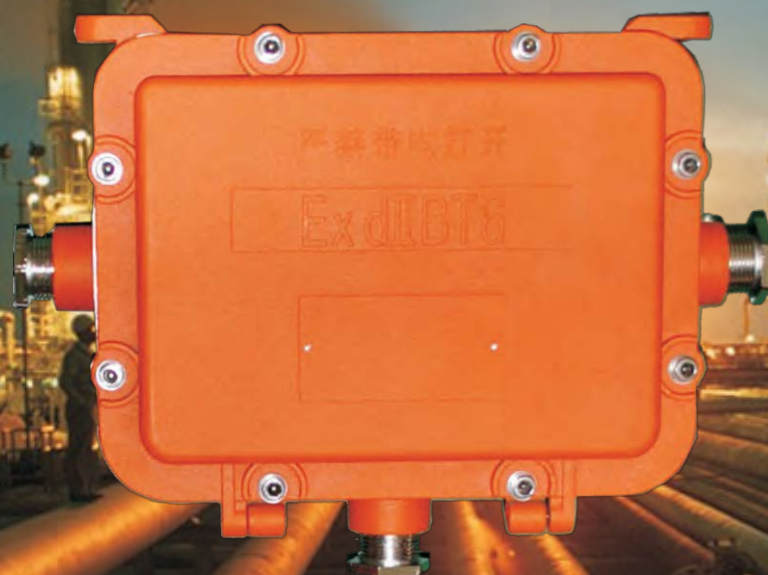




Camel Series



## Emergency explosion proof battery box Group II Zone 1, 2



**Ex d IIB T6 Gb**



★ **Emergency explosion proof battery box**

## ★ INTRODUCTION



### Features and benefits

1. Used in hazardous locations.
2. Aluminum alloy enclosure, high intensity, anti-corrosion, impact resistance.
3. Advanced circuit, high efficiency, high stability, energy saving and maintenance free.
4. Detachable luminaires, easy replacement and maintenance.
5. 24V 5Ah battery, compatible with different luminaires - Treefrog, Arowana, Goldenfrog.
6. Small size, light weight, wall mount, ceiling mount, stanchion mount optional.



### Application

1. Petroleum industry, petrochemical industry, metallurgy industry, power generation industry, fire protection.
2. Drilling site, combination station, oil refinery as emergency lighting.
3. Group II Zone I, 2.



### Executive standard

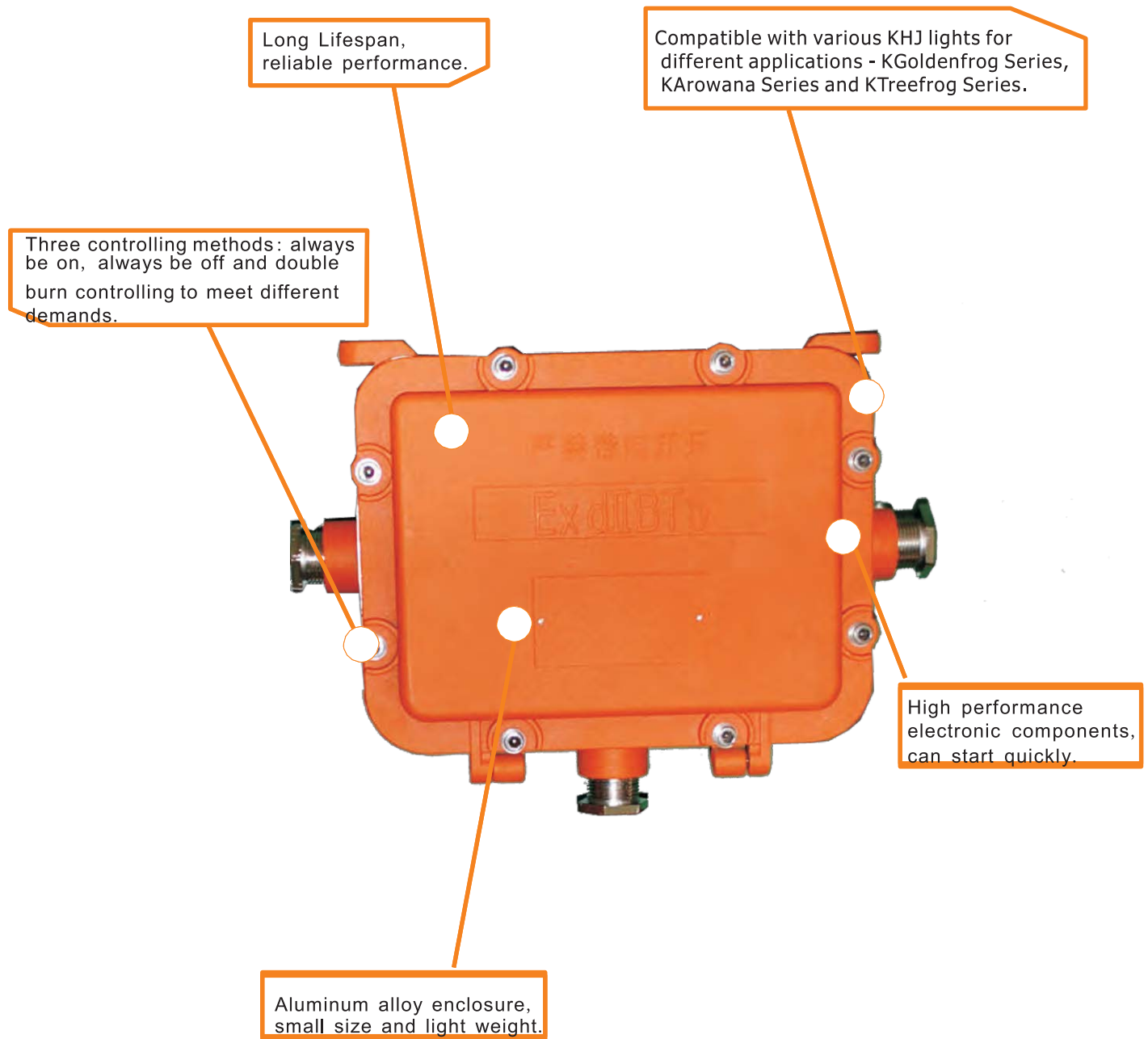
1. IEC 60079-0: 2007, Explosive atmospheres - Part 0: Equipment - General requirements
2. IEC 60079-1: Explosive atmospheres - Part 1: Equipment protection by flameproof enclosures "d"



## ★ CHARACTERISTIC DETAILS



### Product Features Show

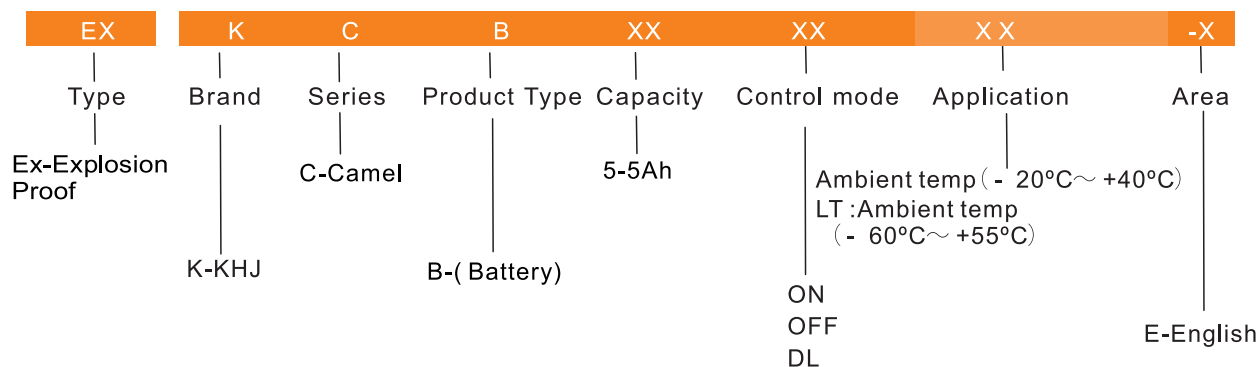


### Characteristic details

# ★ EXPLOSION PROOF EMERGENCY BATTERY BOX



## Product Definition



## Parameter

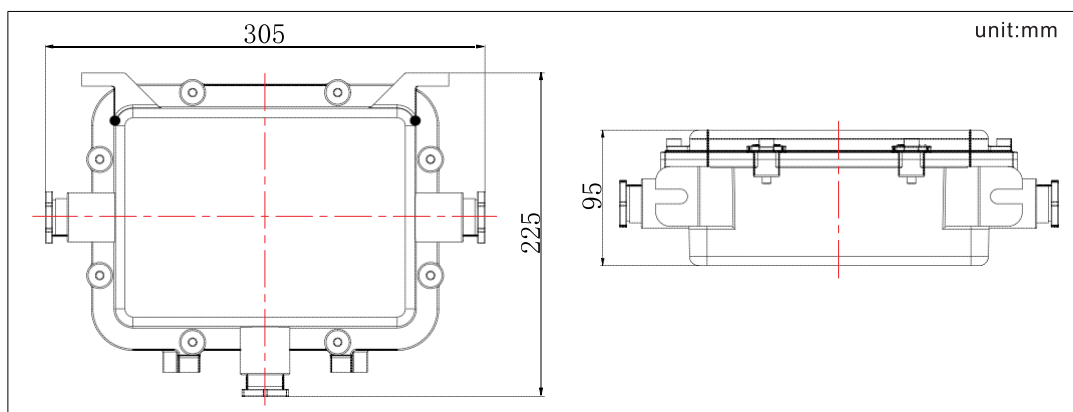
NO.	Parameter		Unit	Data
1	Rated input current		A	1.5MAX
2	Voltage frequency		Hz	50/60
3	Rated input voltage		V	100-240AC
4	Rated power		W	43
5	Rated output current		A	2.5
6	Rated capacity		Ah	5
7	Emergency Working Time		min	12W≥ 180min
				18W≥ 120min
				24W≥ 100min
				30W≥ 90min
				35W≥ 80min
8	Charging time (after full discharge)		h	15-18
9	Lifespan		Cycle	500
10	Size	L * W * H	mm	305*225*95
11	Weight		Kg	4
12	Ambient temp.		°C	-20~40
13	Cable		mm	φ 8~ φ 14
14	IP code		/	IP 66
15	Anti-corrosion		/	WF 2
16	Insulation		/	I



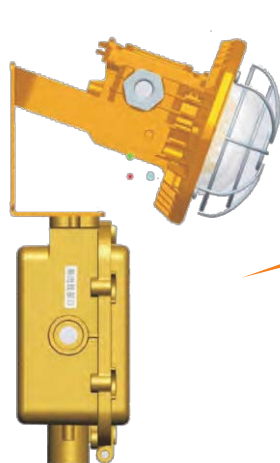
# ★ EXPLOSION PROOF EMERGENCY BATTERY BOX



## Size



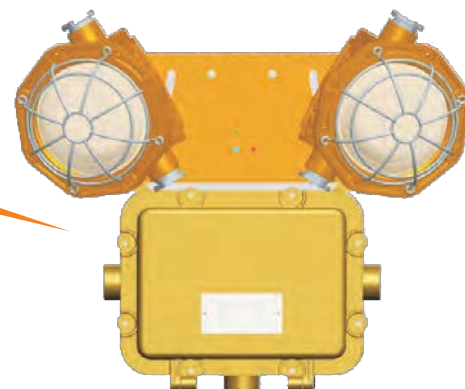
## Explosion proof emergency light optional



Single light



Explosion proof  
emergency battery box



Double lights

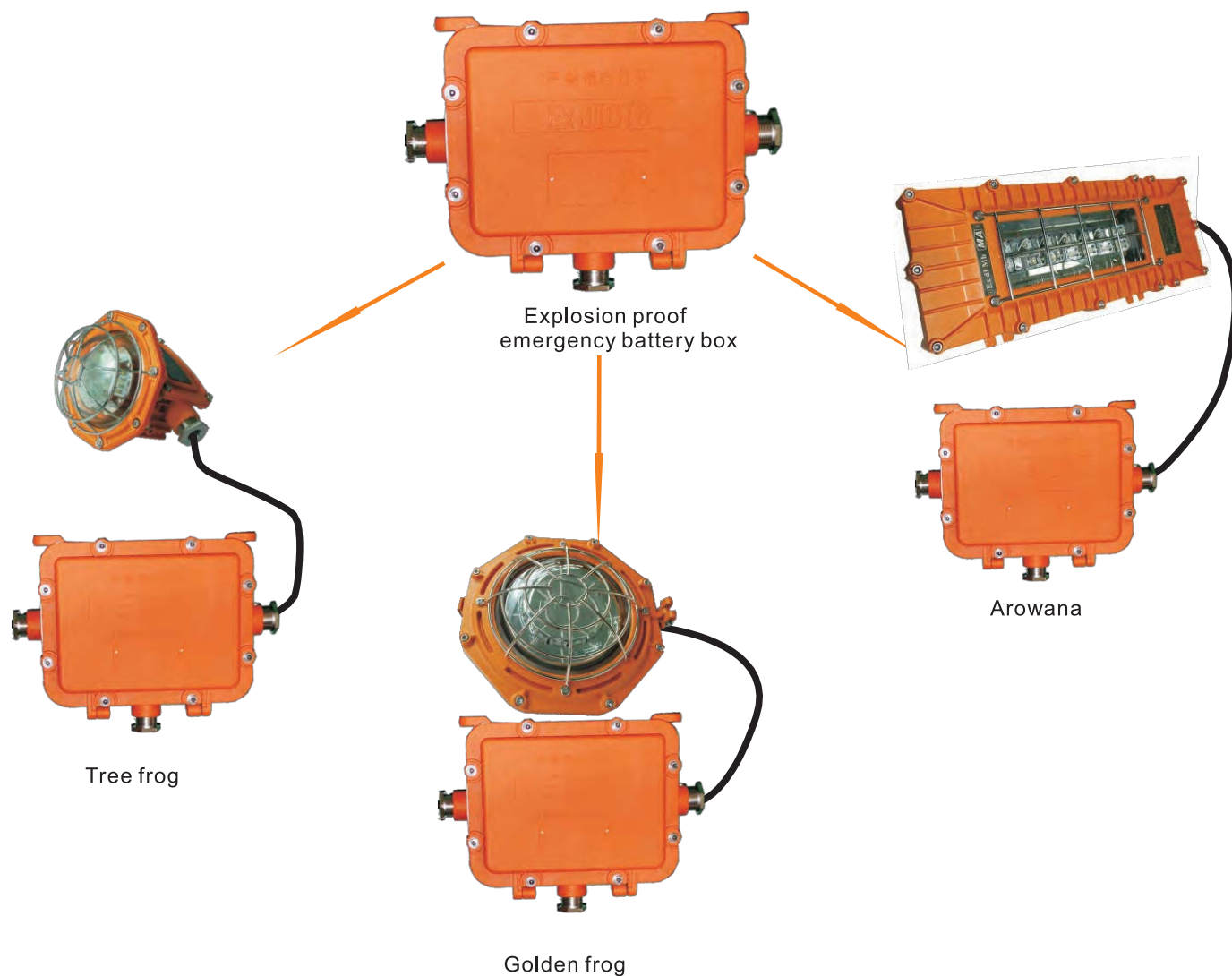
## Main parameter:

	Main part	Optional light	Optional power ( W )	Working time ( min )	Weight(Kg)	Size(mm)	
						Kcamel	Treefrog
Explosion proof emergency light	Explosion proof emergency battery box	Single tree frog	12	≥ 180	6	305*225*95	C 162*163
			18	≥ 120			
			24	≥ 100			
			35	≥ 80			
		Double frog	12	≥ 180	8		

## ★ EMERGENCY EXPLOSION PROOF BATTERY BOX



Emergency explosion proof light optional



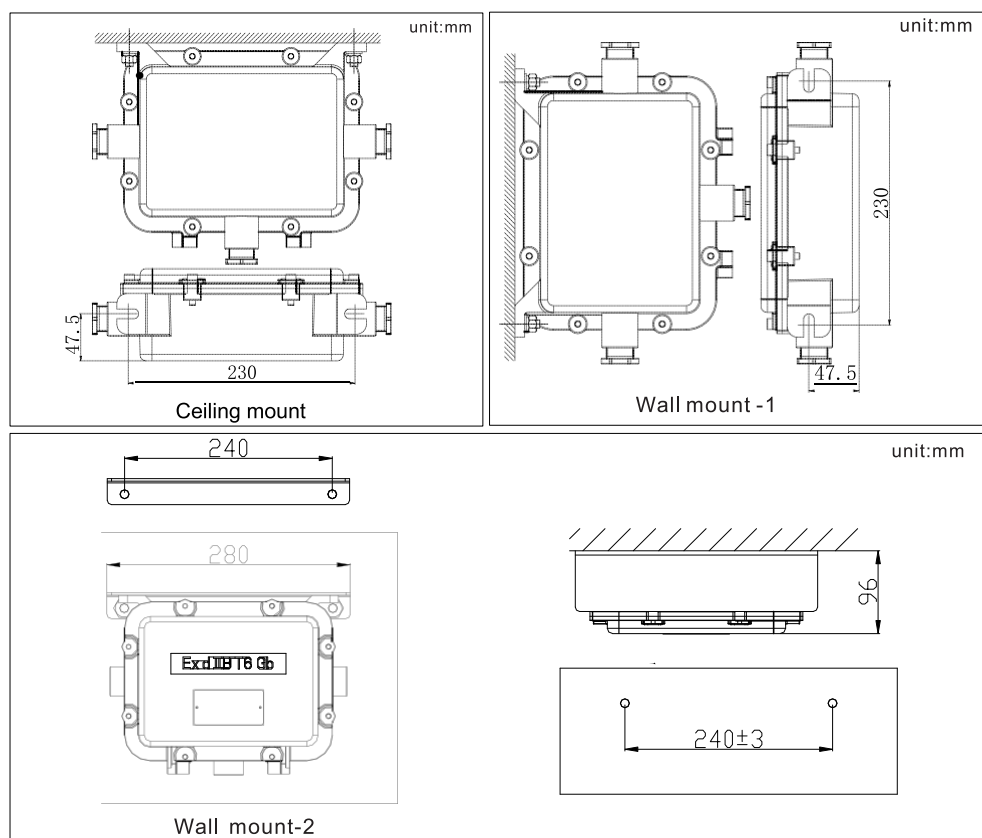
Main parameter:

Emergency explosion proof light	Main part	Optional light	Optional power ( W )	Working time (min)	Weight(Kg)	Size(mm)			
						Kcamel	Treefrog	Golden frog	Arowana
	Explosion proof emergency battery box	Tree frog	12	≥ 180	6	305*225*95	162*163	311*284*190	480*180*62
			18	≥ 120					
			24	≥ 100					
			35	≥ 80					
		Golden frog	30	≥ 90	9. 7				
		Arowana	18	≥ 120	8. 7				
			30	> 90					

# ★ INSTALLATION METHOD



## Installation method



## Optional Parts

NO.	Product type	Working mode
1	Ex-KCB5ON	Always be on
2	Ex-KCB5OFF	Always be off
3	Ex-KCB5DL	Double burn lines

# ★ SERVICE



## Caution

- 1.To avoid the risk of fire, explosion, or electric shock, this product should be installed, inspected, and maintained by a qualified electrician only, in accordance with all applicable electrical codes.
- 2.To avoid electric shock:  
Be certain electrical power is OFF before and during installation and maintenance.  
Luminaire must be supplied by a wiring system with an equipment grounding conductor.
- 3.To avoid burning hands:  
Make sure lens and housing are cool when performing maintenance.
- 4.To avoid explosion:
  - 1)Make sure the supply voltage is the same as the luminaire voltage.
  - 2)Do not install where the marked operating temperatures exceed the ignition temperature of the hazardous atmosphere.
  - 3)Do not operate in ambient temperatures above those indicated on the luminaire nameplate.
  - 4)All gasket seals must be clean.
  - 5)Before opening, electrical power to the luminaire must be turned off. Keep tightly closed when in operation.

## Package Check

- 1.Check the carton and all the components according to the packing list.
- 2.Make sure the product is in good conditions.

## Transportation

Please keep this product from heavy mechanical shock, exposure to strong sunshine, throwing, rolling and stress during transport.

## Storage

Keep in dry, clean and well-ventilated, non-corrosive medium warehouse, the ambient temperature should be -40 °C to 55 °C.

## After-sales service

Installation and maintenance must be according to the instruction.  
If customer cannot deal with it by themselves, please contact with sales department.

## Contact

WP Traders SAC

+511 270 8979 - [www.wptraders.com](http://www.wptraders.com)

